

Exit Tal

SOVIET GRANDMASTER Lev Polugayevsky's victory over his countryman Mikhail Tal in the Candidates quarter finals exposes the occasional, rather arbitrary nature of the knock-out World Championship series. Although a leading Grandmaster, few had expected Polugayevsky to resist the former World Champion from Latvia, let alone trounce him 3-0.

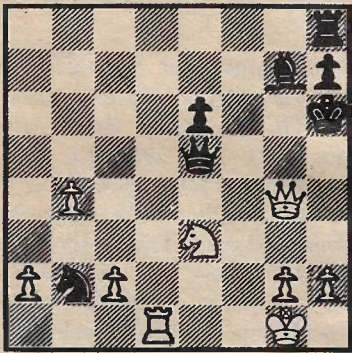
A possible contributing cause may have been the death of Tal's brother shortly before the match started. Or possibly everything just went right for Polugayevsky. Whatever the reason, Tal — despite his brilliant 1979 season which took his rating to No 2 in the world — is now eliminated, a sad blow for connoisseurs of his fiery and uncompromising style.

Polugayevsky now meets Soviet defector Viktor Korchnoi in the semi-finals, an identical situation to 1977 when Korchnoi crushed him and went on to challenge Soviet World Champion Anatoly Karpov.

A neutral venue at Alma Ata, near the Afghan border, was chosen for the Tal-Polugayevsky match since Tal refused to play in Leningrad and Polugayevsky would not play in Latvia. In game two Tal produced a new sacrifice against Polugayevsky's favourite defence.

Nc5! and if 25.Nxc5? Qe3 ch 26.Kf1 Rf8 ch mating. Conceivably he had even reached this position in home analysis — times at this point were Tal 2 hours 5 minutes, Polugayevsky 16 minutes!

- | | |
|------------|-----|
| 24. Nf2 | Nc5 |
| 25. b4 | Na4 |
| 26. Ng4 | Qf5 |
| 27. Ne3 | Nb2 |
| 28. Qh4 | Qe5 |
| 29. Qg4 ch | Kh6 |



Black cannot play 29...Kf7 30.Qf3 ch Qf6 31.Rd7 ch Kg8 32.Qa8 ch Bf8 as after 33.Qe4 White has a winning attack — 33...Qf5 34.Qxf5 exf5 35.Nf6 checkmate. Therefore Tal should have called it a day by taking a draw by perpetual check with 30.Qh3 ch Kg6 31.Qg4 ch etc. Instead he continues the attack, but now all Black's pieces come into play, forcing an unwelcome Queen exchange.

- | | |
|----------|------|
| 30. Re1? | Bf6 |
| 31. b5 | Rf8 |
| 32. b6 | Bg5 |
| 33. Qg3 | Qxg3 |
| 34. hxg3 | Kg7? |

34...Rb8 35.Ng4 ch Kh5 wins considerably more easily.

- | | |
|------------|--------|
| 35. Ng4 | Nc4 |
| 36. Rxe6 | Rb8 |
| 37. Rc6 | Nxb6 |
| 38. Rc7 ch | Kg8 |
| 39. c4 | Na4 |
| 40. Kf2 | Rb2 ch |
| 41. Kf3 | Rxa2 |
| 42. Ke4 | Re2 ch |
| 43. Kf5 | Be7 |
| 44. Nf6 ch | Bxf6 |
| 45. Kxf6 | Nb6 |
| 46. g4 | Rxg2 |

Here we see the power of the extra piece as White's pawns topple.

- | | |
|-------------|--------|
| 47. Kg5 | Rd2 |
| 48. c5 | Nd7 |
| 49. c6 | Rd5 ch |
| 50. Kh6 | Rd6 ch |
| 51. Kg5 | Ne5 |
| 52. Rc8 ch | Kg7 |
| 53. Rc7 ch | Nf7 ch |
| 54. Kf5 | h6 |
| 55. Ke4 | Kf6 |
| 56. Rc8 | Rd1 |
| 57. Rf8 | Rd6 |
| 58. Rc8 | Ng5 ch |
| 59. Ke3 | Ke7 |
| 60. Kf4 | Nf7 |
| 61. Kg3 | Rd3 ch |
| 62. Kg2 | Rc3 |
| 63. Rc7 ch | Kf6 |
| 64. Rc8 | Ne5 |
| 65. c7 | Nf7 |
| 66. Rg8 | Rxc7 |
| 67. Kg3 | Rc1 |
| 68. Ra8 | Ne5 |
| 69. Rf8 ch | Kg7 |
| 70. Rf5 | Rc3 ch |
| 71. Resigns | |

White's last pawn falls after 71.Kf4 Ng6 ch 72.Ke4 Rc4 ch as he cannot play 73.Kf3 due to 73...Nh4 ch forking king and rook.

MURRAY CHANDLER

USSR 1980 SICILIAN DEFENCE

- | | |
|---------|-----------------|
| M. TAL | L. POLUGAYEVSKY |
| 1. e4 | c5 |
| 2. Nf3 | d6 |
| 3. d4 | cxd4 |
| 4. Nxd4 | Nf6 |
| 5. Nc3 | a6 |
| 6. Bg5 | e6 |
| 7. f4 | b5 |

Black's own patent — the Polugayevsky variation.

- | | |
|---------------|------|
| 8. e5 | dxe5 |
| 9. fxe5 | Qc7 |
| 10. Bxb5 chl? | ... |

Although a frequent motif in the Polugayevsky variation, this piece sacrifice is completely new in this position. But Polugayevsky had obviously analysed this line and continued to move quickly. The usual lines are 10.exf6 Qe5 ch or 10.Qe2 Nfd7 11.0-0-0.

- | | |
|-------------|--------|
| 10. ... | axb5 |
| 11. exf6 | Qe5 ch |
| 12. Qe2 | Qxg5 |
| 13. Ndxb5 | Ra5 |
| 14. fxg7 | Bxg7 |
| 15. Ne4 | Qe5 |
| 16. Nbd6 ch | Ke7 |
| 17. 0-0 | f5 |
| 18. Rad1 | Rd5 |

Black avoids the pitfall 18...fxe4 19.Rf7 ch Kd8 20.Nc4 dis ch Qd4 ch 21.Kh1 with good winning possibilities for White.

- | | |
|-------------|------|
| 19. Qc4 | Rxd1 |
| 20. Rxd1 | fxe4 |
| 21. Nxc8 ch | Kf7 |
| 22. Nd6 ch | Kg6 |
| 23. Nxe4 | Na6! |

White has three pawns and the shaky Black king position for his piece, but if Black activates his rook and knight he will take the initiative in the middle game. Polugayevsky's previous move contained the clever resource 24.Rd6